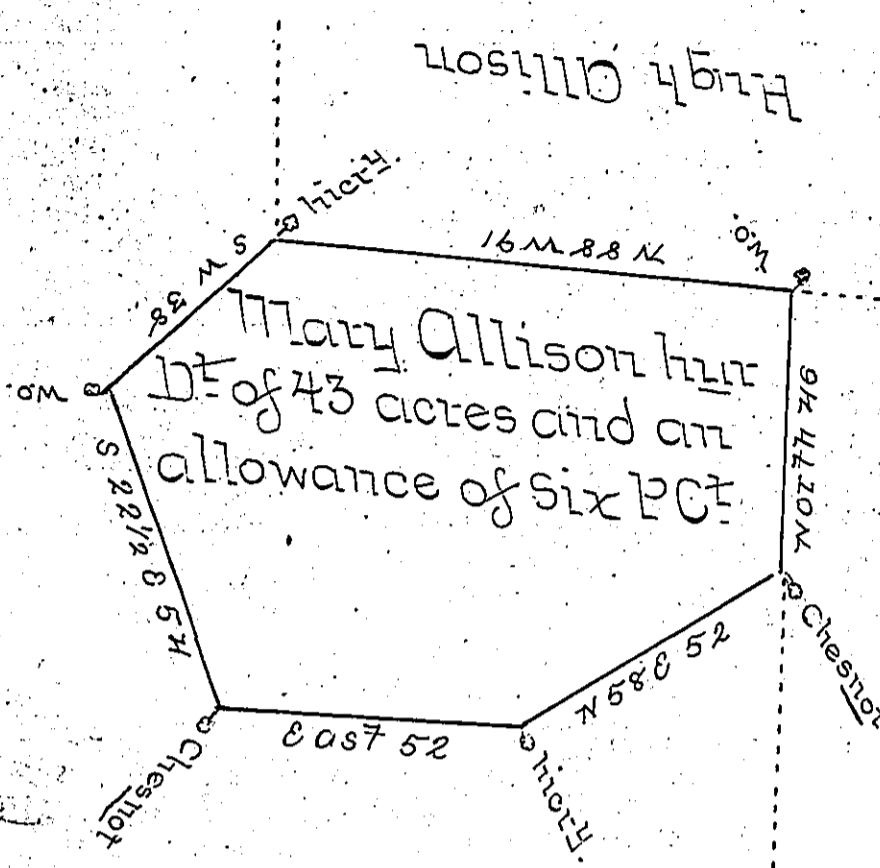


Vacant Land



Mary Allison her
D^t of 43 acres and an
allowance of Six PC^t

Michall Doon

a 52 - 16

Vacant Land

A Draught of Mary Allison's Land situate in Hempfield Town-
ship and County of Lancaster Containing 43 acres With an Allow-
-ance of Six PC^t for Roads and Highways By Virtue of the Honour-
-able the proprietors Warrant Deated the 28th Day of August 1753
and Surveyed the 13th Day of Dec^r 1753

W^m Gallbreath D.S.

To Nicholas Scull Esq^r
Surveyor Generall

IN TESTIMONY that the above is a copy of the original remaining on file in
the Department of Internal Affairs of Pennsylvania, made
conformably to an Act of Assembly approved the 16th day of
February, 1833, I have hereunto set my Hand and caused
the Seal of said Department to be affixed at Harrisburg,
this third day of April 1900.

James W. Latta
Secretary of Internal Affairs.